



C E R T I F I C A T E

Certificate No. 13-PPV-0000309/02-M24-TIC

WE HEREBY CERTIFY THAT THE PHOTOVOLTAIC MODULES WITH THE MODEL
GMA245, GMA240, GMA230, GMA220, GMA210, GMA205, GMA200, GMA190, GMA180,
GMA170, GMA150, GMA145, GMA140, GMA135, GMA130, GMA120, GMA110, GMA100,
GMA90, GMA80, GM75, GMA60, GMA55, GMA50, GMA40, GMA30, GMA20,
GMA10, GMA5
SL220-20 (Tested Types)

And with Types extended for similarity*
- See Annex -

OEM APPLICANT & LICENSE HOLDER
GMA SOLAR INC.

3626, Blvd. Poirier, Montreal, Quebec H4R2J5, Canada

IS IN COMPLIANCE WITH THE REQUIREMENTS OF

IEC 61215 : 2005

Crystalline silicon terrestrial photovoltaic (PV) modules – Design qualification and type approval
&

EN 61730-1 / EN 61730-2 : 2007

Photovoltaic (PV) module safety qualification

To be used in plants at a total voltage up to : 1000 Vdc

AS RESULT OF THE TEST IN OUR APPOINTED LABORATORY

EA ACCREDITED LABORATORY N. 0192

REPORT No. TIC-PVC01CdO08C387002, TIC-PVC01CdO08C387001

Expiring date 11.01.2017

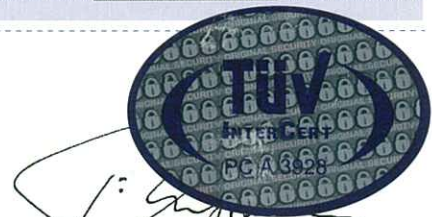
(Providing that the testing basis continues unchanged)

Notes: (*) The manufacturer and the OEM applicant declare that these products are constructed using the same materials, components and processes as the tested type SL220-20. Further details on certified models are reported on the attachment. Technical data, materials and components description are into the indicated test reports. Any changes of the design, materials, components or processing may require the repetition of some of the qualification tests in order to retain type approval. The certification is performed on tested model as retest performed according to IEC61730 "Retesting guideline" for similarity with model SL220-20 (certificate n° C01 08C387001 released by Eurotest Laboratori Srl in date 08/01/2009). This certificate is for type approval and based on voluntarily product test with Factory Inspection. The Manufacturer Inspection is conducted by TÜV INTERCERT on the base of the internal procedures.



DAT-ZE-030/09-00

Am Bonner Bogen 2, D-53227 Bonn,



26.02.2013 Dipl.-Ing. F. Sergizzarea

TÜV INTERCERT Certification Body



C E R T I F I C A T E

Annex 1 of

Certificate No. 13-PPV-0000309/02-M24-TIC

THE PHOTOVOLTAIC MODULES WITH THE MODELS

Types extended for similarity* without need of re-testing
(according to IEC61215 "Retesting guideline"):

Type	Cell Number	Cell Size	Cell Technology	Power
GMA245 *	60	156 x156mm	Mono	245
GMA240 *	60	156 x156mm	Mono	240
GMA230 *	60	156 x156mm	Poly & Mono	230
GMA220 *	54	156 x156mm	Mono	220
GMA210 *	54	156 x156mm	Poly	210
GMA205 *	54	156 x156mm	Poly & Mono	200
GMA200 *	48	156 x156mm	Poly & Mono	200
GMA190 *	48	156 x156mm	Poly & Mono	190
GMA180 *	48	156 x156mm	Poly & Mono	180
GMA170 *	48	156 x156mm	Poly & Mono	175
GMA150 *	36	156 x156mm	Mono	170
GMA145 *	36	156 x156mm	Poly & Mono	150
GMA140 *	36	156 x156mm	Poly & Mono	145
GMA135 *	36	156 x156mm	Poly & Mono	140
GMA130 *	36	156 x156mm	Poly & Mono	130
GMA120 *	36	156 x156mm	Poly & Mono	120
GMA110 *	36	156 x156mm	Poly & Mono	110
GMA100*	36	156 x156mm	Poly & Mono	100

Notes: (*) The manufacturer and the OEM applicant declare that these products are constructed using the same materials, components and processes as the tested type SL220-20. Further details on certified models are reported on the attachment. Technical data, materials and components description are into the indicated test reports. Any changes of the design, materials, components or processing may require the repetition of some of the qualification tests in order to retain type approval. The certification is performed on tested model as retest performed according to IEC61215 "Retesting guideline" for similarity with model SL220-20 (certificate n° C01 08C387001 released by Eurotest Laboratori Srl in date 08/01/2009). This certificate is for type approval and based on voluntarily product test with Factory Inspection. The Manufacturer Inspection is conducted by TÜV INTERCERT on the base of the internal procedures.



DAT-ZE-030/09-00

Am Bonner Bogen 2, D-53227 Bonn,

26.02.2013 Dipl.-Ing. F. Sergizzarea

TÜV INTERCERT Certification Body



C E R T I F I C A T E

Annex 2 of

Certificate No. 13-PPV-0000309/02-M24-TIC

Types extended for similarity* without need of re-testing
(according to IEC61215 "Retesting guideline"):

Type	Cell Number	Cell Size	Cell Technology	Power [W]
GMA90 *	36	156x100mm (2/3)cut cells	Poly& Mono	90
GMA80 *	36	156x100mm (2/3)cut cells	Poly & Mono	85
GMA75 *	36	156x100mm (2/3 cut cells)	Poly & Mono	75
GMA60 *	36	156x78mm (1/2 cut cells)	Poly & Mono	60
GMA55 *	36	156x78mm (1/2 cut cells)	Poly & Mono	55
GMA50 *	36	156x78mm (1/2 cut cells)	Poly & Mono	50
GMA40 *	36	156 x52mm (1/3 cut cells)	Poly & Mono	40
GMA30 *	36	156x 52mm (1/3 cut cells)	Poly & Mono	30
GMA20 *	36	156 x26mm (1/6 cut cell)	Poly & Mono	20
GMA10 *	36	26 x78mm (1/16 x1/2 cut cell)	Poly & Mono	10
GMA5 *	36	63 x22mm (1/7 cut cells)	Poly & Mono	5

Notes: (*) The manufacturer and the OEM applicant declare that these products are constructed using the same materials, components and processes as the tested type SL220-20. Further details on certified models are reported on the attachment. Technical data, materials and components description are into the indicated test reports. Any changes of the design, materials, components or processing may require the repetition of some of the qualification tests in order to retain type approval. The certification is performed on tested model as retest performed according to IEC61215 "Retesting guideline" for similarity with model SL220-20 (certificate n° C01 08C387001 released by Eurotest Laboratori Srl in date 08/01/2009). This certificate is for type approval and based on voluntarily product test with Factory Inspection. The Manufacturer Inspection is conducted by TÜV INTERCERT on the base of the internal procedures.



DAT-ZE-030/09-00

Am Bonner Bogen 2, D-53227 Bonn,



26.02.2013 Dipl.-Ing. F. Sergizzarea

TÜV INTERCERT Certification Body